

HELPING PEOPLE  
CREATE LIVES

**They** value.



 **Momena.**

# Annual Report

2019 - 2020

# Report **Outline.**

<b>CHAIR AND CEO REPORT</b>	<b>3</b>
<b>COVID-19 RESPONSE</b>	<b>4</b>
<b>REBRAND</b>	<b>5</b>
<b>CHANGE OF LOCATION</b>	<b>6</b>
<b>PROGRAMMES AND SERVICES</b>	<b>7</b>
<b>SOCIAL CHANGE</b>	<b>9</b>
<b>OUR TEAM</b>	<b>10</b>
<b>FINANCIAL REPORT</b>	<b>11</b>

# Chair and CEO Report.

The 2019 - 2020 Financial year has been a year of two halves, significantly impacted by the global COVID-19 pandemic. The national level 4 lockdown brought with it uncertainty to staff and clients alike. As a lean and flexible organisation we have been able to adapt and respond quickly and efficiently to the new way of working and living, with the wellbeing of our clients being at the forefront of our service response.

Despite the uncertain environment that COVID-19 has created, the board and team have continued to focus on moving the organisation forward: to expand, innovate and future proof. This financial year has seen the rebrand of the trust, the creation of a Social Change Lead role and the development of a new business arm with a long term aim of securing a sustainable future, enabling us to continue to shape our community so all people, belong, are valued and thrive.



**TANIA WILSON**  
CHIEF EXECUTIVE OFFICER



**VAUGHAN ANDERSON**  
BOARD CHAIR

# Covid-19 Response.

The experience of COVID-19 and the subsequent lockdowns were a difficult and challenging time for the people that we support, as well as for our organisation and others working in the sector.

In the immediate days prior to the level 4 lockdown our team worked tirelessly and in collaboration with other sector providers to ensure that all our clients had everything they required to be supported fully during this time.

The lockdown required creativity and a new way of thinking and communicating with our clients. Although most had access to smartphones, many did not have access to other devices, and the cost of data and Wi-Fi were identified as a barrier to remote communication.

There were a range of responses, initiatives and systems introduced during this time to ensure that all clients could be communicated with and effectively supported during lockdown.




# Rebrand.

The trust has continued to evolve over the past five years with lots of learning and refining along the way. Our ongoing commitment is to seek to improve the way in which we work with people, helping them to achieve success and build momentum in their lives.

With an expanding focus, we knew that it was time to change from Avalon to a new name that would more accurately reflect the way in which work now, and how we will be moving forward into the future.

The Board of Trustees approved the adoption of a new name, Momenta Charitable Trust in August this year. Our new name speaks to the forward momentum we employ in helping our clients to achieve. This forward trajectory is also true of our organisation; we are responsive to the needs and dreams of our community, continuously adapting to achieve the best possible outcomes for clients.



**2014**


An intensive financial and service review resulted in a complete redesign of our service model to align with:

- Expressed demands by those with disability to have services respond to their individual requirements
- Government strategies namely, Enabling Good Lives Principals, Community Inclusion and Participation and the necessity to report on tangible outcomes for individuals
- United Nations Convention on the rights of persons with a disability.




**2015**

The workshops closed in 2015, and Avalon completed an extensive change in management process, that resulted in the service being re-established and relocated in Tauranga central. Avalon's service model focuses on supporting disadvantaged people, who encounter barriers to inclusion, to live a life of value within their community.



**2020**

 **Momenta.**

In 2020, with an entirely new focus, Avalon was renamed Momenta. Standing on the shoulders of those community-minded locals from the 1970s, we play our part in shaping our community so that all people belong, are valued and thrive.

# Change of Location.

The end of the lease period on the 11th Avenue office provided an opportunity to reflect on what was now required for the organisation. To effect meaningful change in the systems that entrench devaluation takes a collaborative, cross-sector, community-based response, and we wanted our working space to provide an opportunity for this to deepen.

The Kollektive is New Zealand's largest co-working space and is dedicated to the success of not for profit, social enterprise and charitable organisations. The Kollektive has provided the ideal working space for Momena. In addition to the collaboration this new space affords, the cost efficiencies that have been generated have allowed for additional funds to be redeployed directly in the service of our clients.



# Programmes and **Services.**

As part of the rebranding process, we have renamed our two core programmes 'Forward, Together' and 'Springboard'. Both programmes provide service to people with a health condition or lived experience of disability.

---

## Springboard.

Springboard is our new transition from school programme where we help prepare students to take the leap from school to adult life.

Working with young people in their last year of school, we connect them to opportunities for training, work or further education. We partner with the student, their whanau and the school to determine which paths will best help them create a life they value.

Over the next 12-18 months further programmes will be designed and rolled out.



# Forward, Together.

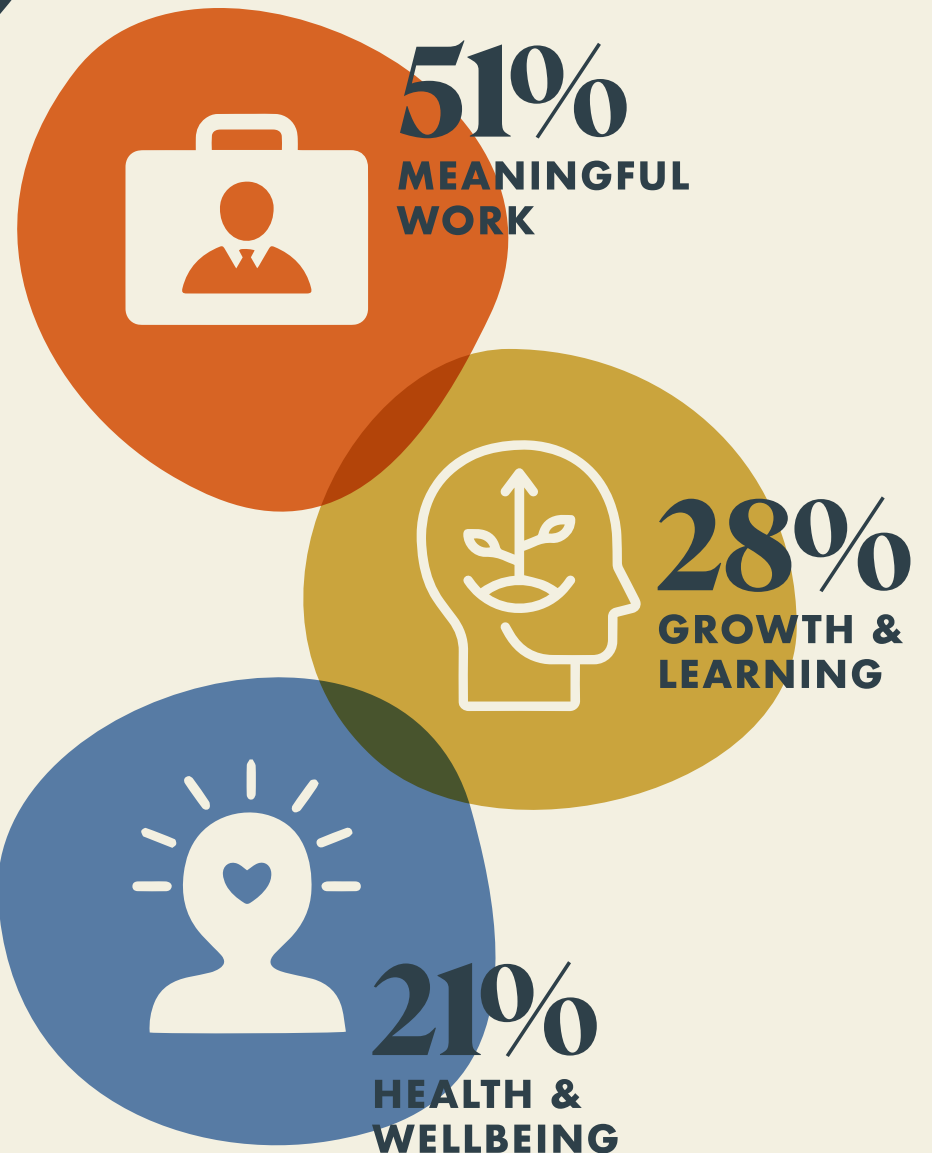
Forward, Together is the name of our flagship programme, a bespoke connecting and coaching service where we work alongside people with a lived experience of disability, helping them to achieve their aspirations.

Our newly named Community Connectors (formerly Facilitators) work one-on-one with our clients to design and plan a pathway that helps them move towards the life that they want.

We work in the three areas of:

- **MEANINGFUL WORK**
- **GROWTH AND LEARNING**
- **HEALTH AND WELLBEING**

The number to the right are the indicators are indicators of the percentage of clients who are actively pursuing aspirations in these life domain areas.





# Social Change.

Through our work we have come to know that direct services alone cannot solve the problems faced by people who are disadvantaged. We have this year created a new role collaborating across businesses, the social sector and the wider community, helping to position Momenta as a thought leader in the social change space.

The goal is to build networks, disrupt systems that entrench devaluation, grow understanding of the challenges facing disadvantaged people in Tauranga Moana and work collaboratively to create lasting change.

The first project of the new role was entitled 'Employer Attitudes Towards Hiring People with Disabilities' and was designed to better understand the current local attitudes of employers on hiring people with disabilities. As a result of the recommendations generated by this research, combined with the findings of previous research in this space, we are now working through identifying opportunities for pilots, programmes and initiatives to improve employment outcomes for those who have a lived experience of disability here in the Bay of Plenty.



# Our Team.

This year we were thrilled to welcome Kerry Webb to Momena as the newly appointed Social Change Lead. We sadly farewelled Kelly Etchells and Daniel Clemens who have gone on to pursue new directions and aspirations and we wish them well in their life journeys.

We are in the process of recruiting two new Community Connectors as we grow and respond to an increasing interest from people and their whanau who would like to work with us in our programmes.

Strengthening and deepening our culture has been a priority this year with a committed focus to our values and the behaviors that support it. We continue to invest in the health, wellbeing and professional development of our team ensuring they, too, are supported to live their good lives of value.

---

## VOLUNTEERS

Momena has several long term, dedicated volunteers who we have immense appreciation for. From supporting clients with literacy development, community contribution and sport, through to contributing in organisational project work, our volunteers significantly and positively impact our clients. We thank them for their ongoing commitment to Momena and our clients.

# Board of Trustees.

We would like to acknowledge and sincerely thank Wendy Nielsen and Michelle Mortlock, who have retired from the Momena board after many years of contribution and support provided to Momena, the board and management team.

The Momena board is strategically focused on moving the organisation towards financial sustainability outside of our current government contracts. To that end, in the second half of 2020 the Momena board will incorporate a new company, Momena Group Limited, as the business enterprise arm of Momena Charitable Trust. This will offer a means of creating diversified income channels as well as aligning with the purpose and values of the trust.

We also are thrilled to have Sam Fellows become a full member of the board. Sam provides not only an enormous range of skills and expertise but a demonstrated commitment to the Tauranga community.

Momena is very fortunate to have a board who generously provide their time and experience for the benefit of our organisation. We sincerely extend our thanks and appreciation for their contribution and for their guidance as we look to continue our progress and development into the future.

# Financial Report.

## SUMMARY

Momenta Charitable Trust has finished the year with a net surplus of \$115,643. The net surplus from direct service was \$62,046.

The trust is trading solvently, with costs contained, and has the opportunity to ensure a sustainable strategy is formulated for the future.

The MSD Participation and Inclusion contract has been fixed until June 2024, which is allowing the trust to have some stability and to ensure service is provided at a high quality.

## STATEMENT OF FINANCIAL PERFORMANCE YEAR ENDED 30 JUNE 2020

REVENUE	2020	2019
Donations, fundraising and other similar revenue	3,591	859
Revenue from providing goods or services	858,121	823,898
Interest, dividends and other investment revenue	161,824	138,870
Distribution from Equality Property Trust	3,639	2,725,000
<b>Total Revenue</b>	<b>1,027,175</b>	<b>3,688,627</b>
<b>EXPENSES</b>		
Volunteer and employee related costs	610,574	52,253
Expenses related to providing goods or services	242,257	190,197
Other expenses	58,701	1,406
<b>Total Expenses</b>	<b>911,532</b>	<b>883,856</b>
<b>(Deficit)/Surplus for the Year</b>	<b>115,643</b>	<b>2,804,771</b>

## STATEMENT OF FINANCIAL POSITION AS AT 30 JUNE 2020

ASSETS	2020	2019
<b>Current Assets</b>		
Bank accounts and cash	147,242	144,824
Debtors and prepayments	32,595	33,984
<b>Total Current Assets</b>	<b>179,837</b>	<b>178,808</b>
<b>Non-Current Assets</b>		
Property, Plant and Equipment	109,053	109,872
Investments	4,736,887	4,611,302
<b>Total Non-Current Assets</b>	<b>4,845,940</b>	<b>4,721,174</b>
<b>Total Assets</b>	<b>5,025,777</b>	<b>4,899,982</b>

## LIABILITIES

Current Liabilities	2020	2019
Creditors and accrued expenses	54,567	41,350
Employee costs payable	38,883	38,451
Other current liabilities	1,668	5,661
<b>Total Current Liabilities</b>	<b>95,118</b>	<b>85,462</b>
<b>Non-Current Liabilities</b>		
Loans	496	-
<b>Total Non-Current Liabilities</b>	<b>496</b>	<b>-</b>
<b>Total Liabilities</b>	<b>95,614</b>	<b>85,462</b>
<b>Total Assets less Total Liabilities (Net Assets)</b>	<b>4,930,163</b>	<b>4,814,520</b>

## ACCUMULATED FUNDS

Opening balance	4,814,520	2,009,749
Current year surplus	115,643	2,804,771
<b>Total Accumulated Funds</b>	<b>4,930,163</b>	<b>4,814,520</b>



# Annual Report

2019 - 2020

---

**CONTACT@MOMENTA.ORG.NZ • 07 579 0585**

**THE KOLLECTIVE - TK, 145 17TH AVENUE, TAURANGA**

**WWW.MOMENTA.ORG.NZ**